

breezeYachting.swiss



Azimut Grande 25 metri 'KW'

Price: € 4'500'000 | 26.60m | 2020

Her top speed is 28.0 kn and she boasts a maximum range of 300.0 nm when navigating at cruising speed, with power coming from two MAN diesel engines. She can accommodate up to 8 guests in 4 staterooms, with 3 crew members waiting on their every need. She has a gross tonnage of 117.0 GT and a 6.18 m beam.



KW's interior configuration has been designed to comfortably accommodate up to 8 guests overnight in 4 cabins, comprising a master suite, 2 double cabins and 1 twin cabin.

breezeYachting.swiss



SPECIFICATIONS

Manufacturer

Azimut Benetti S.p.A.

Model

Grande 25 metri

Building Material:

Carbon Fiber + GRP

Length

26.60 m

Main Engines

2 x MAN 1650 HP

Generators

2 x ONAN 27kW

Engine / Generator Hours

278 hrs / 454 hrs

Model Year

2020

Fuel type:

Diesel

Beam max

6.20 m

Draft

1.58 m

Displacement

77t

Cruising Speed

24 kn

Max Speed

28 kn

breezeYachting.swiss





breezeYachting swiss





breezeYachting swiss





AZIMUT
Grande

KW

JERSEY

breezeYachting.swiss





breezeYachting.swiss





breezeYachting.swiss





breezeYachting swiss





breezeyachting.swiss





breezeYachting.swiss





breezeYachting.swiss





breezeYachting.swiss





breezeYachting swiss





breezeYachting swiss





breezeYachting .swiss





breezeYachting swiss





breezeYachting swiss





breezeYachting swiss





breezeYachting swiss







breezeYachting swiss





breezeYachting .swiss





breezeYachting swiss





breezeYachting swiss



List of Features

MAIN SYSTEM

- Double Onan generator 27 Kw 50HW-220
- Stabilizing fins (generator upgrade included)
- Hydraulic Stern thruster 15 kW
- Upgrade for air conditioning (Gulf)

ELECTRONICS

- Raymarine AIS 700
- Raymarine Gold Package
- Raymarine Videocameras (n.4)
- Audio/Video Package

APPLIANCES

- Dishwasher
- Microwave oven in crew area
- Washer and dryer
- Combo in Lower Lobby
- Winecooler in lower lobby



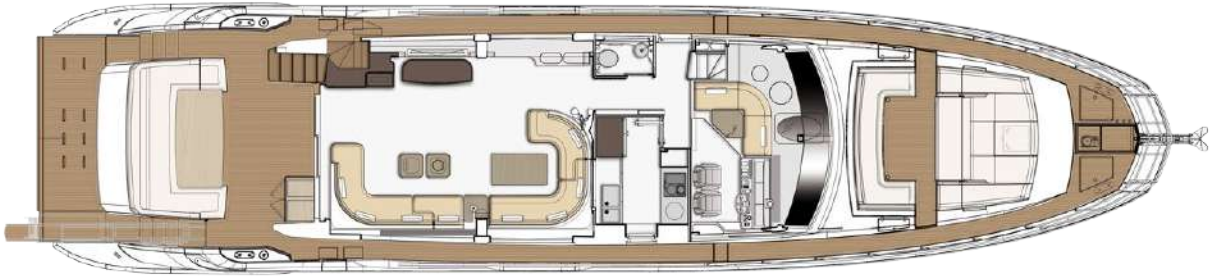
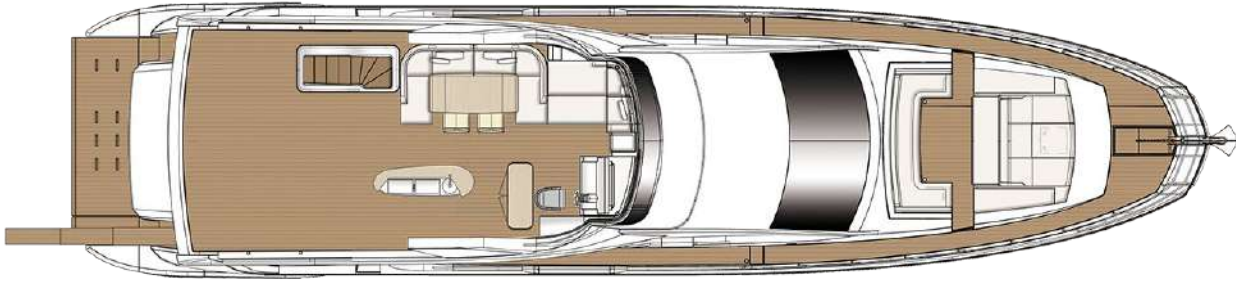
EXTERIOR

- Additional cleats in midship
- Bench on bow convertible (electrically operated) with foldable table
- Bow sun shade with removable carbon fiber poles for sunbathing area
- Cockpit chair (mod. Nausica)
- Cockpit table in teak with stainless steel frame (in lieu of standard teak table)
- Electric awning for aft fly (requires hard top)
- Electric searchlight
- Flagpole Flybridge table in teak with stainless steel frame (in lieu of standard teak table)
- Hard top on flybridge
- Hauling-launching system for tender
- Hidden scenic lights on bow
- Nr.4 underwater lights Seavision on transom
- Name on transom in stainless steel (each letter)
- Shore water plug Spreader lights on aft fly
- Teak on flybridge

INTERIOR

- Additional folding bed in portside guest cabin
- Design table lamp in master cabin
- Coffe table in salon
- Design table lamp in salon
- USB sockets in all cabins and salon (2 each)
- Extra-size master bed
- Maindeck lounge version
- Marble floor in day toilet head
- Privacy enclosure for main helm with smart glass
- Roman blinds in cabins (manual)
- Safe in all cabins
- Third bed in crew cabin
- Vanity table in master cabin
- Vanity with pouff in vip cabin
- Wooden floor in main deck (colour varies depending upon main furniture wood selection)
- Starboard guest cabin converted in to Twin guest bed sliding





breezeYachting.swiss



[For more information, CLICK HERE](#)



breezeYachting.swiss





CORNELIUS KISTLER

Founder & CEO

 WHATSAPP ME

m. +41 79 702 7000

ck@breezeyachting.swiss

breezeYachting.swiss

WE SPEAK YACHTING. LET'S TALK.



Gotthardstrasse 26, Zug, Switzerland

www.breezeyachting.swiss

DISCLAIMER

The company offers the details of this vessel in good faith but cannot guarantee or warrant the accuracy of this information nor warrant the condition of the vessel. A buyer should instruct his agents, or his surveyors, to investigate such details as the buyer desires validated. This vessel is offered subject to prior sale, price change or withdrawal without notice.