

breezeYachting.swiss



Azimut Grande 27 METRI

EUR 5'450'000 excl. VAT | 27m | 2018

KEY POINTS

- 5 cabins version, master cabin on the main deck
- Recent interior refit in 2023
- Registered length under 24 meters
- Fold out swim platform converts into a beach club
big volume of 145 gt



SPECIFICATIONS

Builder:	Azimut
Model:	Grande 27 Metri
Year:	2018
Hull/Superstructure:	GRP / GRP
Deck material:	Teak
Exterior Designer:	Righini
Interior Designer:	Salvagni
Length overall:	26.78m
Beam:	4.97m
Draft:	1.93m
Displacement	92.96 t
Cabins:	5 + 2 crew
Heads:	4 + 1 crew
Engines:	2 x MAN V12
Engine power:	2 x 1900 hp
Engine hours:	880 hrs (10.09.2023)
Maximum speed:	28 knots
Cruising speed:	24 knots
Economy speed::	11 knots
Range:	390 nm at cruising speed
Generators:	2 x Cummins Onan 27 KW
Generators hours:	Port: 2968 hrs (10.09.2023) / Stb: 2304 hrs (10.09.2023)
Fuel tank:	9.500 L
Fresh Water tank:	2000 L
Black Water Tank:	850 L
Gray Water Tank:	850 L







breezeYachting swiss





breezeYachting.swiss





breezeYachting.swiss











breezeYachting swiss





breezeYachting.swiss





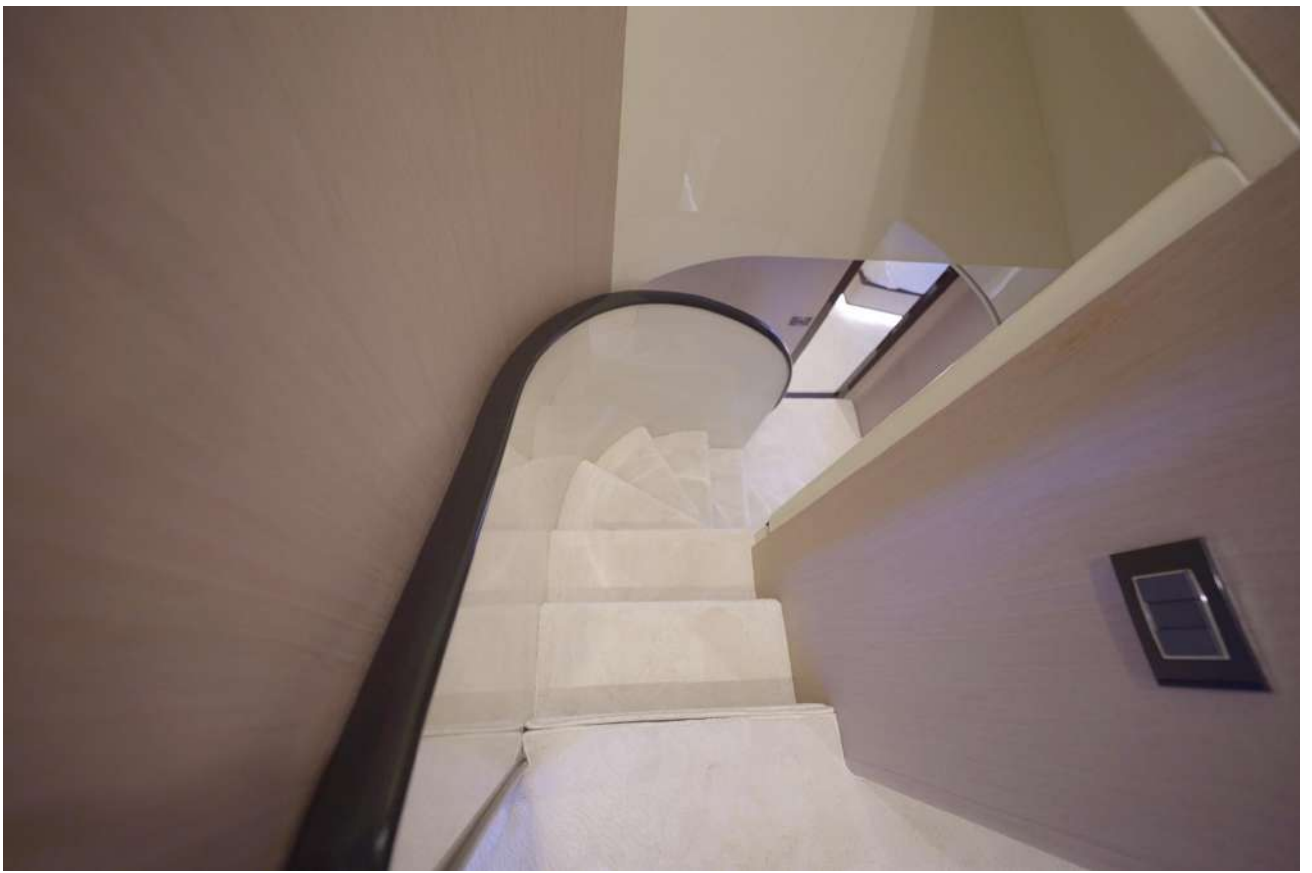


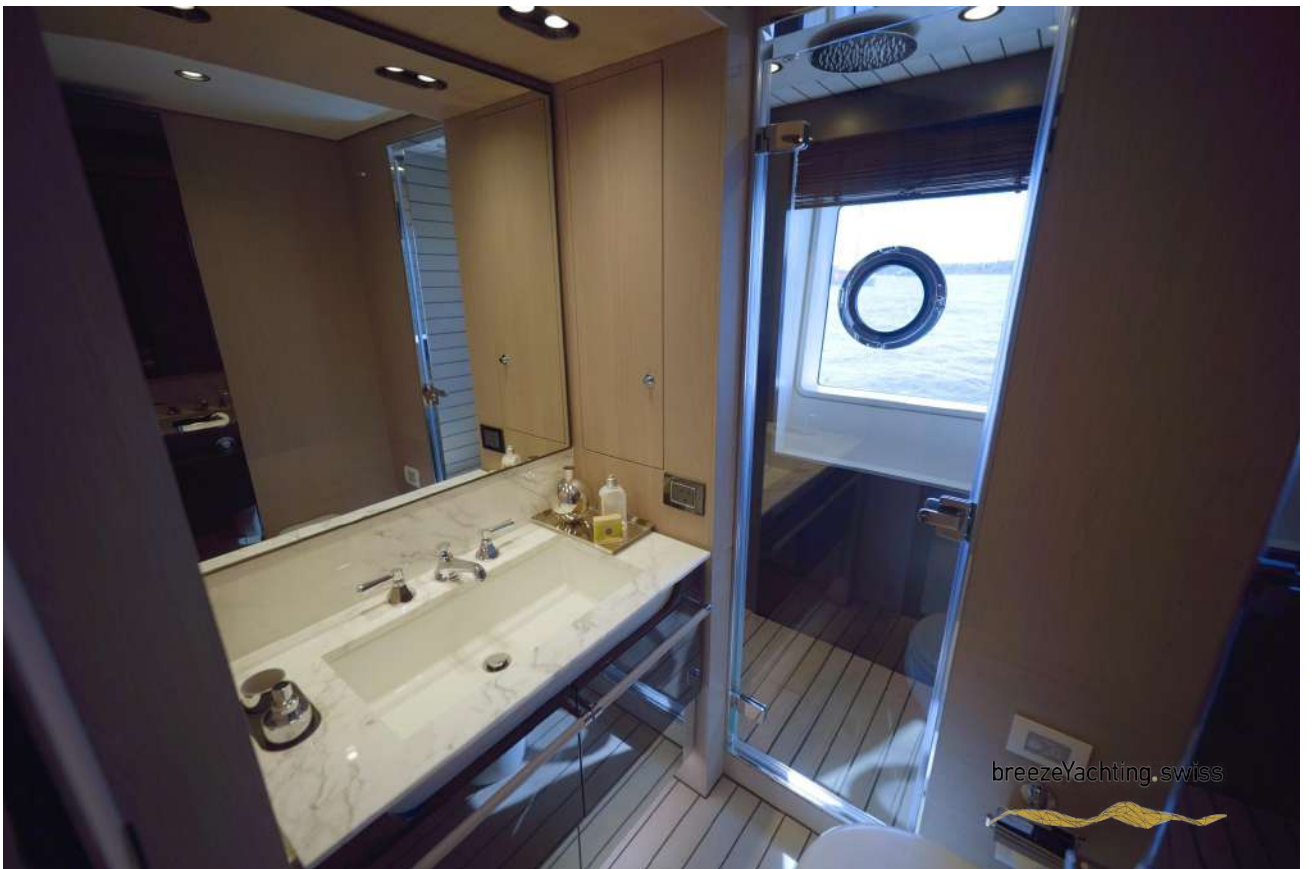


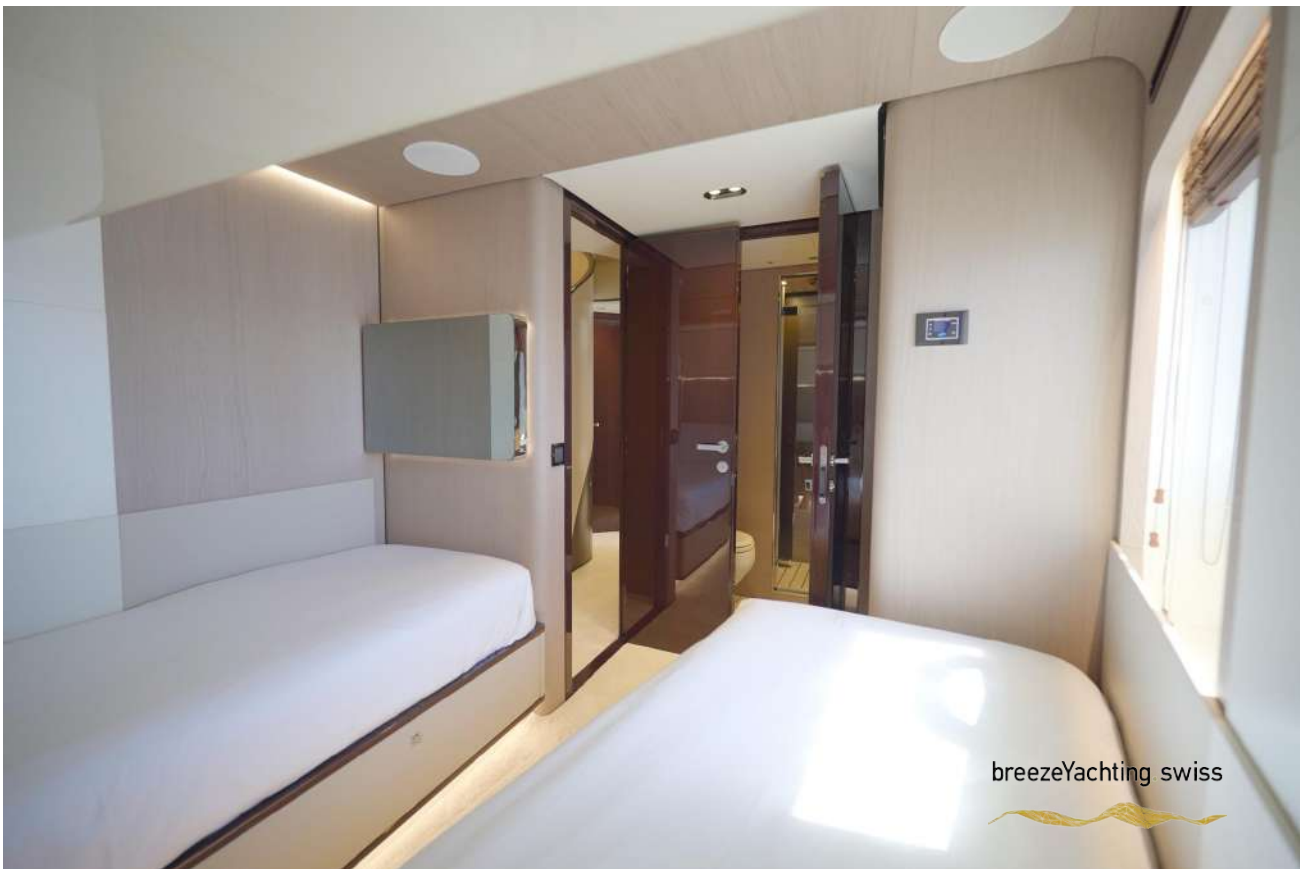
breezeYachting swiss











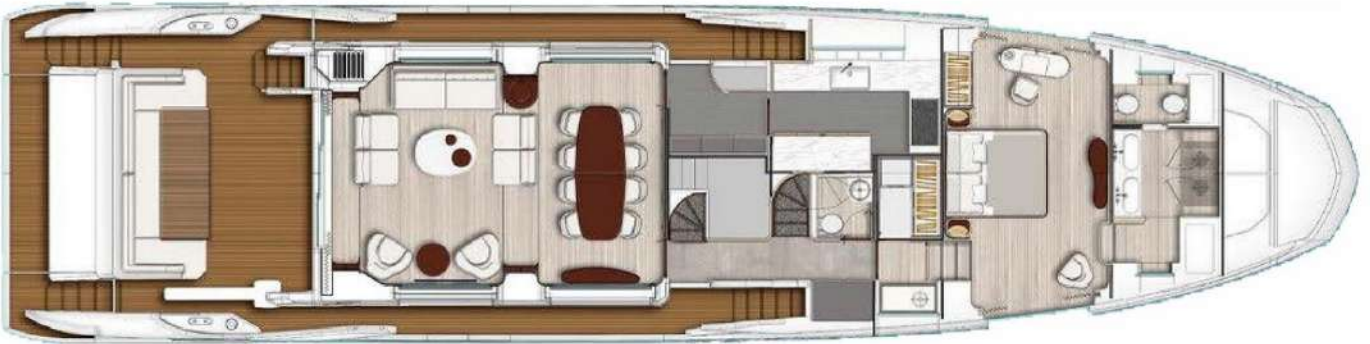
breezeYachting swiss







LAYOUTS



EQUIPMENT

Navigation & Communication

- MONITORS:
 - Wheelhouse: 3 x SIMRAD NSS-16 Evo multifunction
 - Fly: 2 x SIMRAD NSS-16 Evo multifunction
- FLIR: 1 x Thermo camera Wheelhouse
- AUTOPILOT: SIMRAD IS40
- RADAR: SIMRAD BROADBAND 4G Open Array 36 nm
- INSTRUMENT: Digital & Analogic Levels/Alarms
- VHF: SIMRAD RS90
 - 1 x Wheelhouse
 - 1 x Fly
- DEPTH SOUNDER: SIMRAD DST 800
- SEARCHLIGHT: 1 x remote controlled in Wheelhouse & Fly
- RUDDER ANGLE:
 - 1 x Wheelhouse
 - 1 x Fly
- AIS
- ANTENNA SAT: KVH TV6 -SAT
- DOME: Empty Dome KVH

Deck Equipment

- ANCHOR: 2 x 79 kg
- CHAIN: 2 x 100 m – 12mm
- WINDLASS: 2 Electric Anchor windlass 4000 W
- WINCHES: 2 Electric Mooring winches 3600 W
- GANGWAY: Electro-hydraulic -150 kg capacity
- BATHING DOOR: Hydraulic – 1.000 kg capacity
- GARAGE: For 4.5m Tender & Jet ski
- SWIM LADDER: Hydraulic Swimming Ladder + Manual
- WASHING SYSTEM: Deck washing system with stern and bow connections
- FLYBRIDGE: Integrated electric bimini
- BOW: Electric Bimini over the sofa

Domestic Equipment

- MAIN GALLEY:
 - FRIGOMAR Fridge 419 L and Freezer 247 L
 - MIELE Oven 90 cm
 - MIELE Hob ceramic glass 90 cm
 - MIELE Extractor hood 60 cm
 - MIELE Dishwasher
- FLY BRIDGE:
 - GAGGENAU barbecue
 - VITIFRIGO Fridge
 - SINK
- CREW DINETTE: Fridge, drawer-type
- LAUNDRY: HOOVER washer & dryer
- VC: TECMA

Other Equipment

- UNDERWATER: 8 x Underwater lighting (stern & sides)
- DIMMER: Internal areas lighting 24 V LED
- BALCONY: Opening sliding window portside main saloon
- SAFE:
 - 1 x Master Cabin
 - 1 x Captain Cabin
- COVERINGS:
 - SET front and side windows (black)
 - SET for Fly and decks furniture
 - SET perforated sheets at the stern (white)



Machinery

- MAIN ENGINES: 2 X MAN V 12 - 1900
- POWER OUTPUT @ 100%MCR: 2 X 1.397 KW/1,900 HP @ 2.300 rpm
- ENGINE HOURS: Port: 880– Stb:880 (at 10.09.2023)
- GEAR BOXES: ZF 3050V / 3:1
- PROPULSION: Shaft Line
- PROPELLER: 5 blades NiBrAL “C-foil”
- PERFORMANCE:
 - Max speed 28 kts
 - Cruising speed 24 kts
 - Economic speed 11 Kts
- RANGE:
 - Range @ cruising speed 390 nm
 - Range @ economy speed 1.000 nm

Auxiliary Machinery & Electrical Systems

- MAIN GENERATORS: ONAN 2 x 27 Kw
- GENERATORS HOURS: Port: 2968 – Stb: 2304 (at 10.09.2023)
- ELECTRICITY: 230V, 110V, 24V SYSTEM
- SHORE POWER: Connections with cable 1x110v – 1x220V
- BATTERIES AGML:
 - Service pack:10x90Ah
 - Engine pack: 6x90Ah S
 - Generators pack: 2x90Ah
- CHARGERS
 - Service - Mastervolt 2 x 80A
 - Engine - Mastervolt 1 x 30A
 - Generators – Mastervolt 1 x 10A
- INVERTER: MASTERVOLT 2 x 3000W
- CONVERTER: Two converters ASEA

Ancillary Equipment

- STABILIZERS: FINS - CMC Hydraulic - zero speed function
- STEERING SYSTEM: Rudders with double hydraulic ram system
- BOW THRUSTER: CMC Hydraulic
- STERN THRUSTER: CMC Hydraulic
- TRIM TABS: Humphree
- FUEL FILTERS: RACOR (double)
- WATER PUMP: 2 x 24V
- BILGE PUMP: 4
- AIR CONDITIONING: CONDARIA 180.000 BTU
- BOILER: 2 x 100 lt

Safety and Security

- SAFETY: 2x Airmar life rafts – 16 life jackets
- FIRE FIGHTING:
 - Fixed Novec system.
 - Smoke detector system.
 - Sensors in engine room.
 - Main fire pump with 2 deck hydrants.
 - Portable powder extinguishers CO2
- ALARMS: Fire alarm engine room / wheelhouse
- SECURITY: 3 x CCTV cameras system

Audio/Video Systems

- TV:
 - Salon: 65” on fold-out mechanism
 - Master cabin: 55”
 - VIP cabins: 42”
 - Guest cabins: 32”
 - Crew cabin: 32”
- SOUND SYSTEM: SONOS system in salon, owner’s & guest’s cabins, aft deck, fly, galley.
- DECODER: Satellite decoder for salon, owner’s cabin and aft deck.
- WIFI: Indoor and Outdoor WiFi coverage.







EMMA KARANOVA

Yacht Advisor

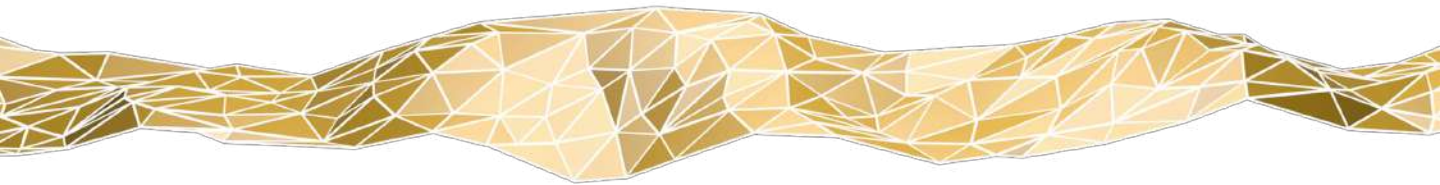
 WHATSAPP ME

m. +34 622 128 338

emma@breezeyachting.swiss

breezeYachting.swiss

WE SPEAK YACHTING. LET'S TALK.



Switzerland ● Malta ● Spain ● Monaco

www.breezeyachting.swiss

DISCLAIMER

The company offers the details of this vessel in good faith but cannot guarantee or warrant the accuracy of this information nor warrant the condition of the vessel. A buyer should instruct his agents, or his surveyors, to investigate such details as the buyer desires validated.

This vessel is offered subject to prior sale, price change or withdrawal without notice.



[For more information, CLICK HERE](#)



breezeYachting.swiss

