

breezeYachting.swiss



# 2019 Azimut Grande 27 metri 'WAVE'

80'000 EUR per week in low season  
85'000 EUR per week in high season

Motor Yacht WAVE is a sporty-looking, modern 26.78m (87'86") luxury vessel built in Italy by Azimut Yachts and launched in 2019.



Her inviting interiors were created by salvagni architetti, with the exteriors by Stefano Righini. She can sleep up to 10 guests in 5 cabins, with a crew of 4 on board.

breezeYachting swiss



# SPECIFICATIONS

**BUILDER:** Azimut Benetti S.P.a.

**MODEL:** Grande 25 metri

**YEAR:** 2019

**LOA:** 26,78 m

**BEAM:** 6,59 m

**INTERIOR DESIGN:** Achille Salvagni

**EXTERIOR DESIGN:** Stefano Righini

**BUILDING MATERIAL:** GRP

**GUESTS:** 10

**CABINS:** 5

**CREW:** 4

**CONFIGURATION:** 1 MASTER / 1 VIP / 1 DOUBLE / 2 TWIN

**ENGINES:** 2 x MAN V12 1900 HP

**MAXIMUM SPEED:** 27 knots

**CRUISING SPEED:** 24 knots

**FRESH WATER:** 2,000 liters

breezeYachting.swiss



# ACCOMMODATION

The main deck aft has a comfortable alfresco dining area aft with a C-shaped sofa and a large raised table. A port stairway grants access to the flybridge, and two stairways aft lead to the swim platform. Side walkways connect to the foredeck casual dining and sunbathing area, which consists of another C-shaped sofa and drinks table, and a large sunbed on the bow.

The flybridge offers sun loungers along the stern and a starboard sofa that joins into the C-shaped sofa that is part of the alfresco dining area. A wet bar is opposite, and the pilot and co-pilot chairs are forward. A retractable sun roof lets guests choose the amount of sunlight or shade they desire to the forward and amidships area.

The guest accommodation is forward and amidships on the lower deck with the crew accommodation behind, the engine room aft and the tender and water toys storage in the stern.

The main deck layout places the Master suite forward, which connects through to the starboard day head, where there is access to a day head and stairs down to the lower deck guest accommodation, or up to the raised pilothouse and the flybridge. The galley is amidships to port and both lead through to the formal dining area, designed to seat all eight guests in a warm and welcoming environment. Large windows let the light come pouring in for daytime entertainment in the lounge, and at night the versatile lighting provides the right ambiance for any occasion. A pair of loveseats and a larger sofa are placed around a coffee table to port.

**breezeYachting**.swiss





breezeYachting swiss





breezeYachting swiss





breezeYachting swiss





breezeYachting.swiss





breezeYachting swiss





breezeYachting.swiss





breezeYachting.swiss





breezeYachting.swiss





breezeYachting swiss





breezeYachting swiss





breezeYachting swiss





breezeYachting swiss





breezeYachting.swiss





breezeYachting swiss





breezeYachting.swiss





breezeYachting.swiss





breezeYachting.swiss





breezeYachting.swiss





breezeYachting.swiss





breezeyachting.swiss





breezeYachting.swiss





breezeYachting.swiss





breezeYachting swiss







breezeYachting swiss





breezeYachting swiss





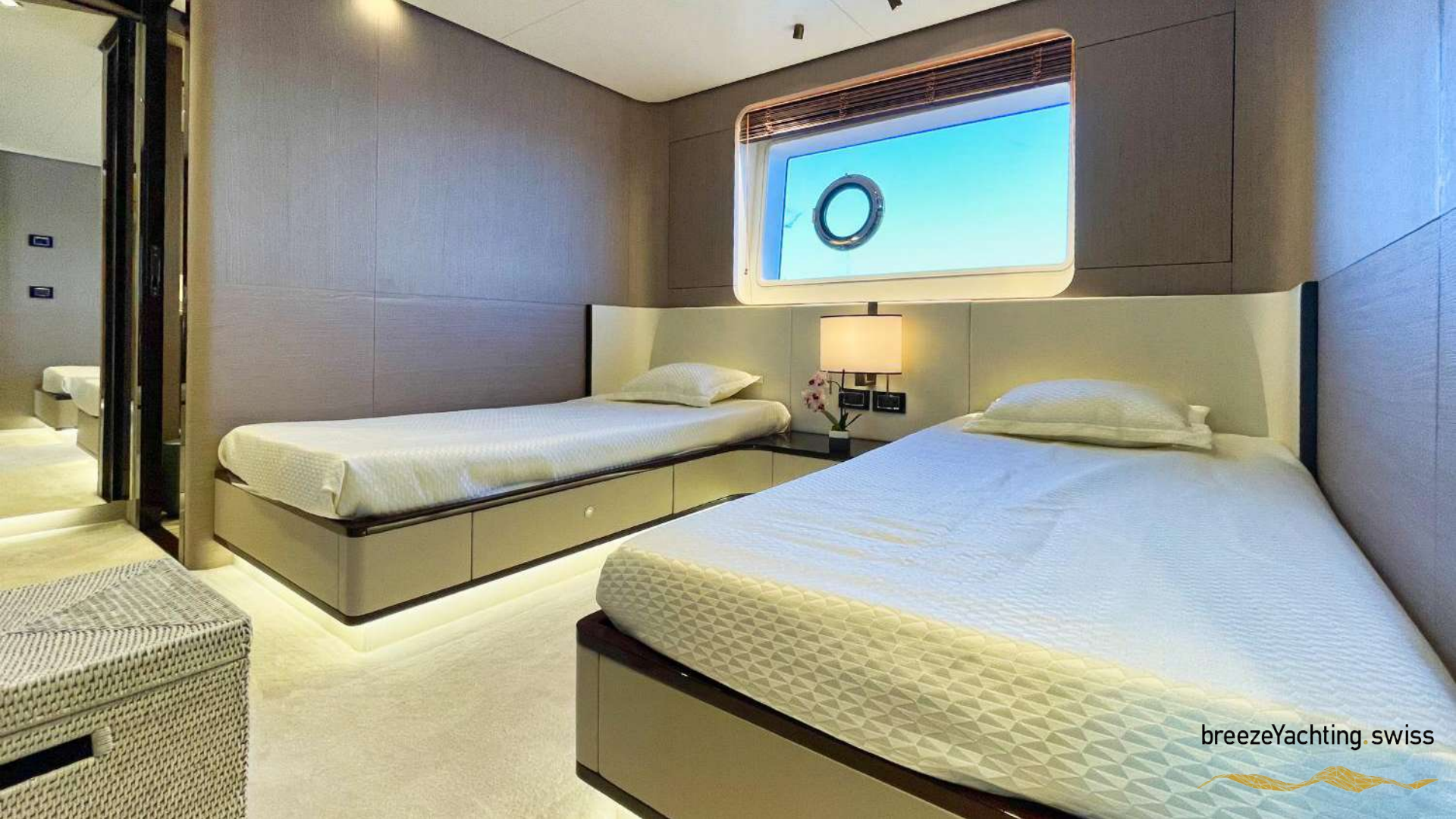
breezeYachting .swiss





breezeYachting swiss





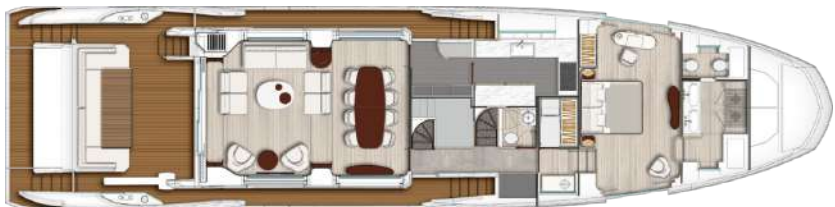
breezeYachting swiss





breezeYachting swiss





breezeYachting.swiss



[For more information, CLICK HERE](#)



breezeYachting swiss





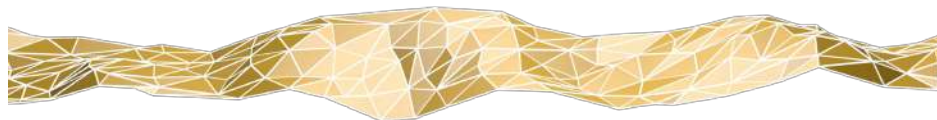
**ANASTASIA PAK**

Charter Advisor

m. +33 7 67 19 54 87

[apq@breezeyachting.swiss](mailto:apq@breezeyachting.swiss)

**breezeYachting.swiss**



Switzerland · Malta · Spain · Monaco

[www.breezeyachting.swiss](http://www.breezeyachting.swiss)

DISCLAIMER

The company offers the details of this vessel in good faith but cannot guarantee or warrant the accuracy of this information nor warrant the condition of the vessel. A buyer should instruct his agents, or his surveyors, to investigate such details as the buyer desires validated. This vessel is offered subject to prior sale, price change or withdrawal without notice.