

breezeYachting.swiss



## Leopard 27M 'DG'

EUR 700'000 incl. VAT | 27m | 2000/2008/2020

# This Leopard 27 yacht is a perfect example of a well-kept open fast cruiser

She offers generous and well-arranged exterior spaces, classic cozy interior, and reliability of a fine Italian craftsmanship.

Her deep V hull allows excellent stability in heavy seas. With 2 MTU 1800hp engines and a surface drive system you can expect greater fuel efficiency for a cruising speed of 26 knots.



breezeYachting swiss



# SPECIFICATIONS

Builder: **Leopard**

Model: **27m**

Year Built: **2000**

Refit Year: **2008, 2020**

Superstructure: **Fiberglass GRP**

Hull Type: **Sport Yacht**

LOA: **27 m**

Beam: **6.05 m**

Draft: **1.2 m**

Displacement: **68 t**

Guests: **6**

Cabins: **3 ( master + double + twin)**

Crew: **3**

Engines: **2 x MTU M90**

Engine Hours: **1900 hrs**

Total power: **3600 HP**

Generators: **Kohler 18kw + 25kw**

Generator Hours: **3126 / 3852 hrs**

Drive: **Arneson drive**

Cruising speed: **26 knots**

Max speed: **33 knots**

Consumption: **450 l/hr**

Fuel capacity: **8100 l**

Fresh water capacity: **2000 l**

breezeYachting.swiss



# Key Points

- VAT Paid
- W5 services done on MTU engines in 2020
- Electric retractable roof on the upper saloon allowing great views and extended space
- A well-kept yacht both technically and cosmetically
- Good value for money





breezeYachting swiss





breezeYachting swiss





breezeYachting swiss









breezeYachting swiss







breezeYachting.swiss











breezeYachting.swiss





breezeYachting swiss





breezeYachting swiss









breezeYachting.swiss



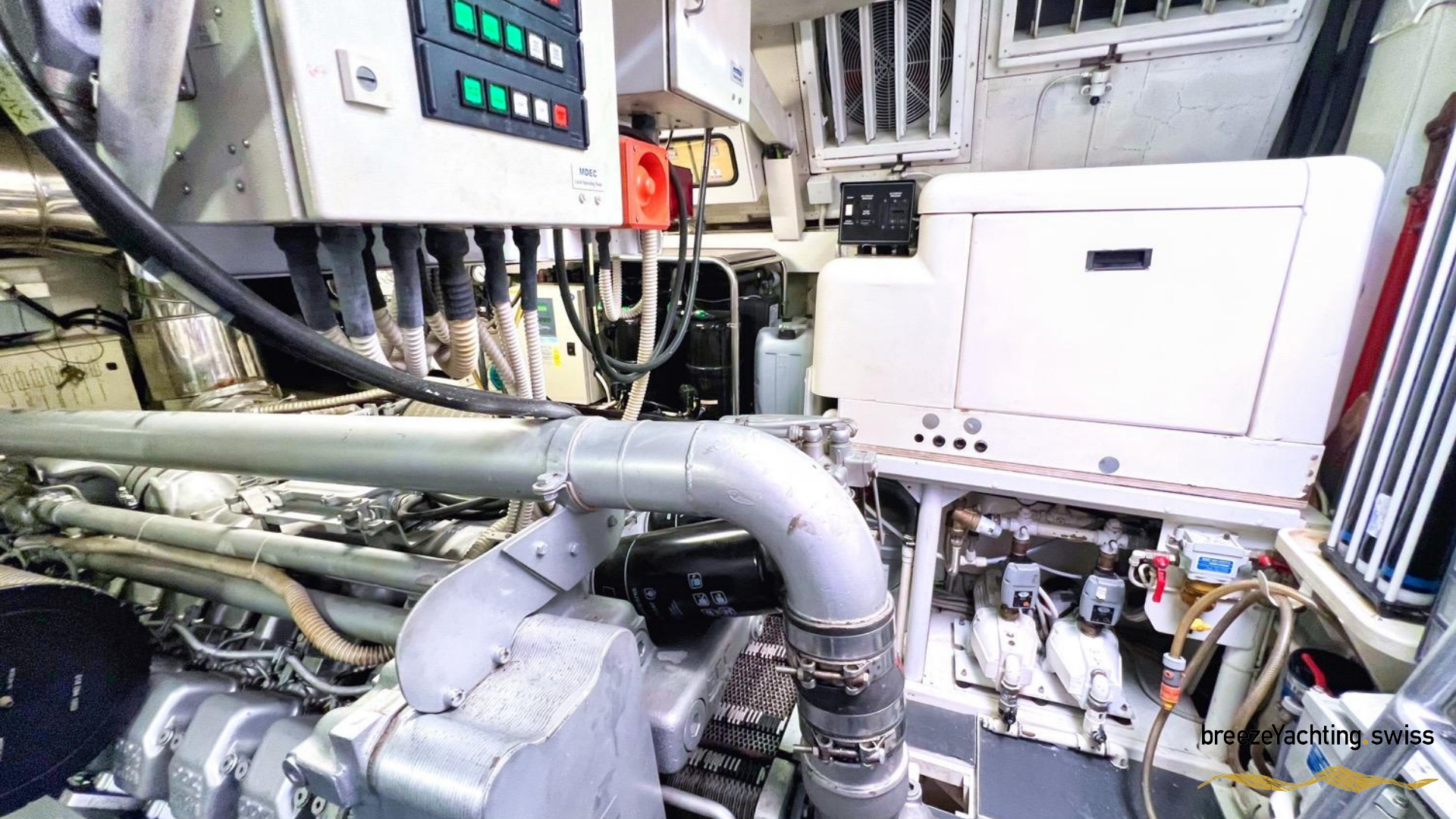


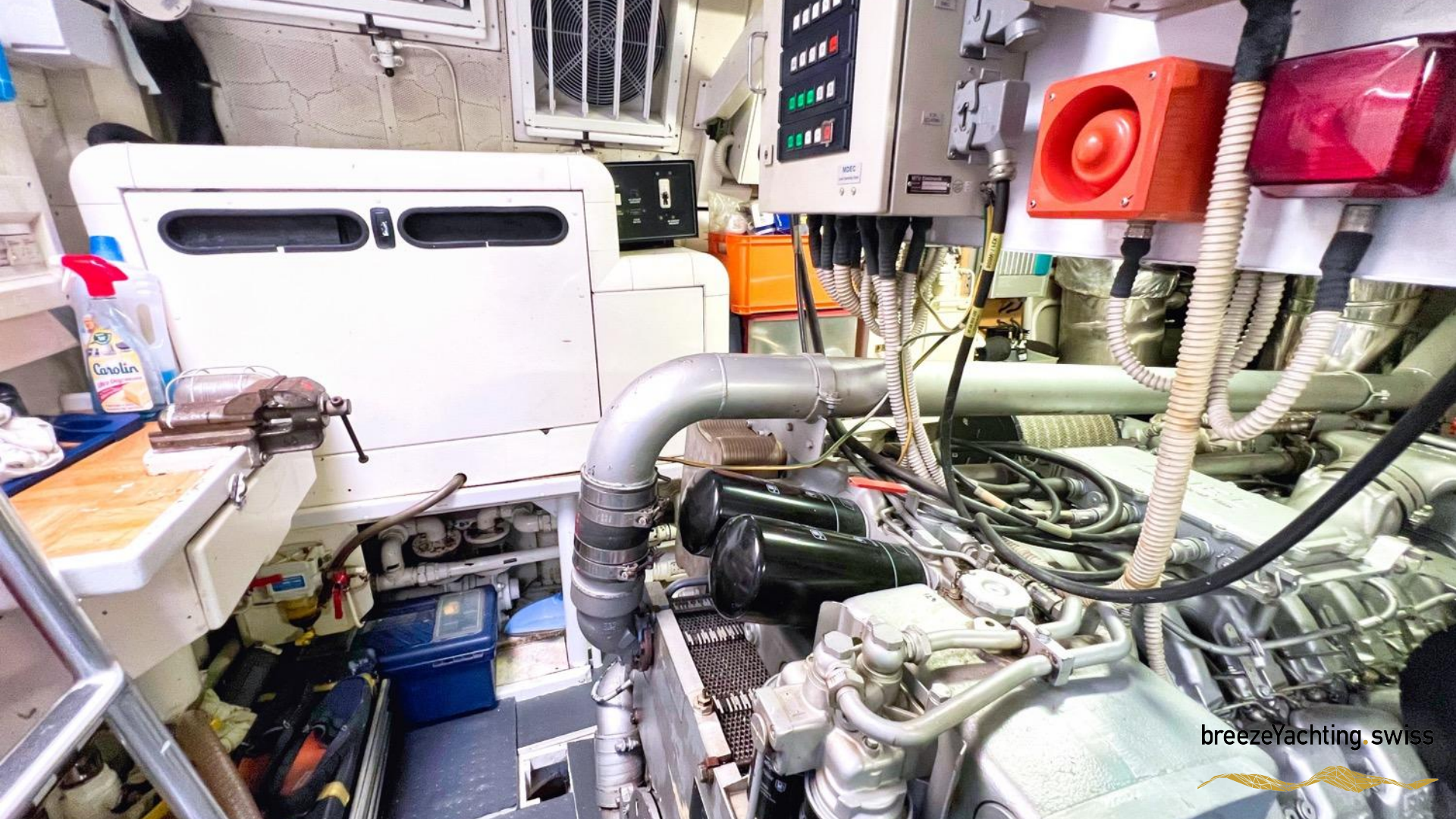
breezeYachting swiss













WILLIAMS

17-8

D N 903344 RT 76 76 100.



# ACCOMODATION

## Cabins:

- Reverse cycle air conditioning throughout salon + cabins + cockpit
- Cream light carpet everywhere on the floor
- Creamy silk tended ceilings with a Mahogany panelling interior

## Master cabin:

- Full beam master cabin with double king size bed
- A settee and study
- Ensuite Bathroom with shower
- Single wash basin with marble surround and mirror
- 2 full height wardrobes
- TV (Samsung), DVD ( Samsung) and stereo system
- Large mirror on the ceiling



# ACCOMODATION

## Guest cabin port side:

- Twin beds
- Bedside table in the middle
- TV (Samsung), DVD (Sony) and stereo system
- Full height wardrobe
- Ensuite bathroom with a shower

## Guest cabin starboard side:

- Double bed
- Bedside table
- TV (Samsung), DVD (Sony) and stereo system
- Full height wardrobe
- Ensuite bathroom with a shower

## Galley

- Frigomar fridge
- Bosch Microwave
- Bosch 4 x zone vitro-ceramic hob
- Bosch oven
- Double sink
- Washing machine

Day head with a shower.

The crew cabins are located forward on the lower deck with 3 berths with 2 accesses through the foredeck hatch.



## Engine room

**Engines:** 2 x MTU M90 1,800Hp

**Generators:** Port 1 x Kohler 18kw,

Starboard 1 x Kohler 25kw

**Watermaker:** Idromar 150 l/h

- Hydraulic unit for garage door and gangway
- AC unit
- Fresh water pump

## Safety equipment

- Emergency Tel.
- Security TV
- Fire extinction system
- Fire detection
- Gas detection
- Wireless alarm

## Deck equipment

- 2 x anchors 75Kg with 100m chain diam. 12mm
- Mooring winch x 2
- Anchor winch Sanguinetti
- Hydraulic passerelle
- Hydraulic garage door
- Aft Tents
- Electric Windlass
- Teak in All Deck Area
- Swimming Platform
- Electric Rooftop



## Navigation & communication equipment:

- SHIPMATE RS8400 VHF with distress touch/MMSI
- INMARSAT telephone
- DELTANAV Intercom: engine room, fore & aft deck
- FURUNO radar Arpa
- B & G Hydra 2000
- FURUNO GPS Navigator
- New SIMRAD chart-plotter
- SIMRAD Robertson AP20 autopilot interfaced with GPS
- Twin MTU screens and engine controls
- Rudder angle indicator
- Illuminated compass
- Twin QUICK anchor chain counter
- SANSHIN HR1012 search light remote control
- NAVEL tank level control system
- Hydraulic steering wheel + tiller joystick
- Bow thruster control
- Electrically adjusted navigator seat

## Tender & toys:

- WILLIAMS Jet Tender 325



[For more information, CLICK HERE](#)



breezeYachting.swiss





**EMMA KARANOVA**

Yacht Advisor

 WHATSAPP ME

m. +34 622 128 338

[emma@breezeyachting.swiss](mailto:emma@breezeyachting.swiss)

# breezeYachting.swiss

WE SPEAK YACHTING. LET'S TALK.



Bruderholzallee 162, Basel, Switzerland

[www.breezeyachting.swiss](http://www.breezeyachting.swiss)

DISCLAIMER

The company offers the details of this vessel in good faith but cannot guarantee or warrant the accuracy of this information nor warrant the condition of the vessel. A buyer should instruct his agents, or his surveyors, to investigate such details as the buyer desires validated. This vessel is offered subject to prior sale, price change or withdrawal without notice.