

breezeYachting.swiss



Monte Carlo 76 Yacht For Sale

EUR 1'700'000
VAT Not Paid



REMARKS

Looking for a motoryacht that has been looked after extremely well, with great survey results, and low engine hours? Keep reading, because this Monte Carlo 76 yacht for sale might just be what you've been waiting for! 'Andiamo' has recently undergone an interior refit by the shipyard, comes with a 1 year warranty on all systems built by Monte Carlo Yachts (i.e. water systems, bilge system, electricity , etc...) and has just gotten her engines and generators serviced this past spring. The award winning model has a great open concept layout, 4 spacious cabins and an exterior made for entertaining.

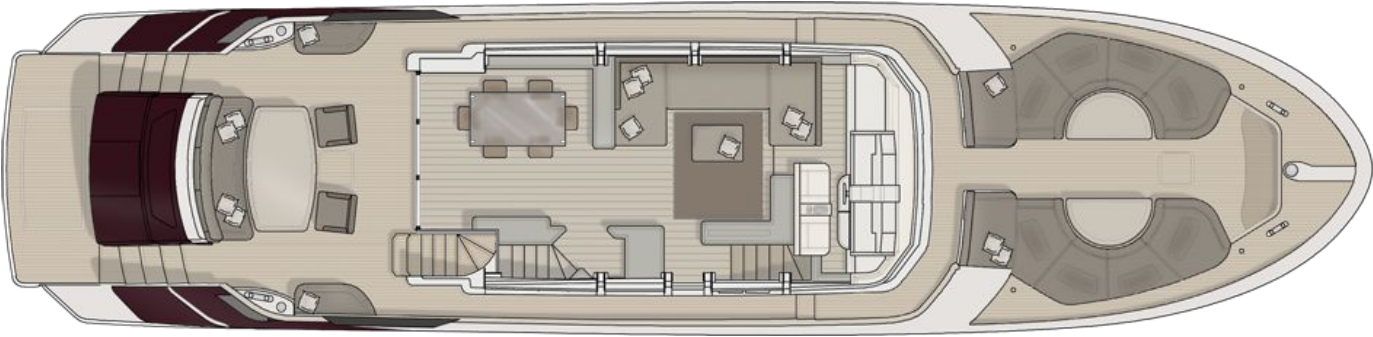
breezeYachting.swiss





breezeYachting.swiss





SPECIFICATIONS

Manufacturer

MONTE CARLO YACHTS

Model

MCY 76

Exterior & Interior Designer

Nuvolari & Lenard Design

Flag

USA

Length

23,05 m

Draft

1,6 m

Year built

2011

Refit

Interior

Hull Type

Cored FRP

Classification

CE Design Category A

Beam

5,65 m

Gross Tonnage

53

breezeYachting.swiss



SPECIFICATIONS

Main Engines

MAN V12 D2862LE443, 2 x 1400 hp

Water

1000 l

Max Speed

31 knots

Generators

Kohler, 2 x 20 kW

Shorepower

230 v AC

Guest Configuration

8

Fuel

Diesel / 4000 l

Cruising Speed

26 knots

Engine Hours

553

Generator Hours

360

Staterooms

4

Crew Configuration

2

breezeYachting.swiss





breezeYachting swiss









Miele





breezeYachting.swiss







breezeYachting.swiss





breezeYachting swiss





breezeYachting.swiss





breezeYachting swiss





breezeYachting swiss

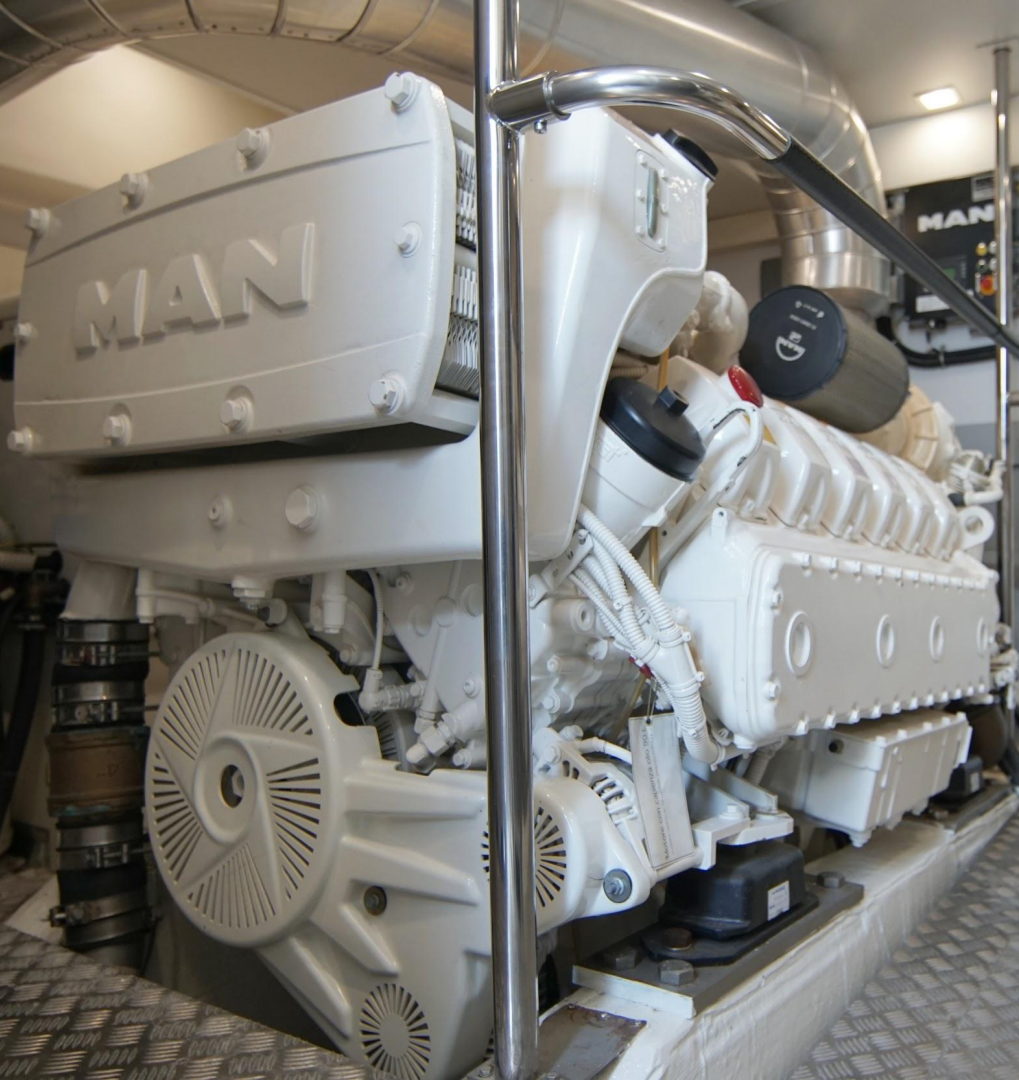






breezeYachting.swiss





breezeYachting.swiss





breezeYachting swiss



EQUIPMENT

Machinery

Main Engines: 2 x 1400 hp
Engines Type: MAN V12 D2862LE443
Hours: 553
Gear-Box: ZF665V
Drive: V-drive

Speed-Consumption:

Cruising: 29 knots @ 2000 rpm, 360L p/hr
Max: 34 knots @ 2280 rpm, 473L p/hr

Generators & Electricity

Output: 2 x 20 kW
Generators: Kohler, 360 hrs
Fuel Consumption: 5ltrs p/hr at full load
Shore Power: 230 v AC

Batteries

Main Engines Starting: 2 x 225 Ah
Generator Starting: 2 x 130 Ah
Services: 8 x 160 Ah
Thruster & Windlass: 2 x 160 Ah

Air Conditioning Type

2 units Reverse cycle 36 000 BTU Dometic Cruisair

Other Machinery

Watermakers: Aquamatic Sea Recovery 900-1 GPD
Trim Tabs-Stabilisers: HUMPHREE
Bow thrusters: Sleipner SidePower
Steering System: Hydraulic

Communication System

VHF: Raymarine RAY 240E VHF

Navigation System

Radars: 1 Raymarine color
Gyrocompass: 1 Raymarine
Magnetic Compass: In the wheelhouse
Auto Pilot: Raymarine ST70 instrument w. Automatic Control Unit
Depth Sounder: Raymarine ST70 instruments
GPS: Raymarine
Plotter: 4 Raymarine 19 Inch multifunctional displays
Wind-Speed Log: Raymarine ST70 instruments

breezeYachting.swiss



EQUIPMENT

Entertainment System & Equipment

Video Equipment: Blu Ray player and Sharp LCD TV in the main saloon, player and an LCD TV in all cabins

Audio Equipment: Bose system in the saloon and cockpit. Sony system on the flybridge

Galley & Laundry Equipment

1 Miele induction stove, 1 Miele microwave with grill, Miele fridge/freezer in the galley

Electric grill on flybridge + fridge & freezer

Wine chiller in the main saloon

Miele softtronic washing machine with dryer

Deck Equipment

Anchor Windlass: Quick 24V with chain counter

Aft Warping Capstands: 2 Quick 24V

Anchors: 40 kg galvanized

Anchor chains: 12mm 100m long

Passerelle: Opacmare

Swimming Platform: Hydraulic driven lifting platform with teak decking

Security Equipment

Cameras: 2

CCTV System: Cameras in the engine room and cockpit

Monitors: 4 Raymarine

breezeYachting.swiss



EQUIPMENT

FireFighting Equipment

Fire Control System: FM2000 system in the engine room, hydrant on the bow

Fire Extinguishers: 8

Alarms: Yes/ in wheelhouse

Safety Equipments

Life Rafts: 1 Osculati 8 persons

Life Rings: 1 with light and line

For more information, [CLICK HERE](#)

For virtual tour, [CLICK HERE](#)

breezeYachting.swiss





Cedrick Leclerc

Yacht Consultant Monaco

Mob +33673783657 e. cl@breezeyachting.swiss

breezeYachting.swiss

Gotthardstrasse 26, 6300 Zug

Switzerland

T +41 44 488 40 80

F +41 44 488 40 88

breezeYachting.swiss

