

breezeYachting.swiss



SUNSEEKER 86 Yacht For Sale

EUR 1'575'000

Year 2008

REMARKS

This 2008 Sunseeker 86 has been looked after extremely well, with a permanent crew onboard since her delivery date. CHOCO has a great layout that allows for lots of space and amazing entertainment features. With 4 cabins and 4 ensuites, she comfortably accommodates 8 people overnight and has ample space on the flybridge and main deck to host more day visitors. Her layout and amenities make her a great candidate for chartering, should you choose to charter her out. CHOCO has had upgrades done, is up to date on all scheduled maintenance, and only requires a minimal amount of work upon purchase.





breezeYachting.swiss



SPECIFICATIONS

Manufacturer

SUNSEEKER

Model

Yacht 86

Exterior & Interior Designer

Sunseeker Design Team

Flag

Croatian

Length

26,48 m

Draft

2,0 m

Year built

2008

Refit

2013/2018

Hull Type

GRP / planning

Classification

CRS Croatian Register of Shipping

Beam

6,5 m

Gross Tonnage

119

breezeYachting.swiss



SPECIFICATIONS

Main Engines

Caterpillar C32 ACERT, 2 x 1825 ps

Water

1500 l

Max Speed

29kt @ 2350 RPM

Generators

Kohler 27kw

Shorepower

220V

Guest Configuration

8

Fuel

Diesel / 7500 l

Cruising Speed

20kt @ 1850 RPM

Engine Hours

2420

Generator Hours

2

Staterooms

4

Crew Configuration

4

breezeYachting.swiss





breezeYachting_swiss



breezeYachting.swiss











breezeYachting.swiss





breezeYachting.swiss







breezeYachting.swiss



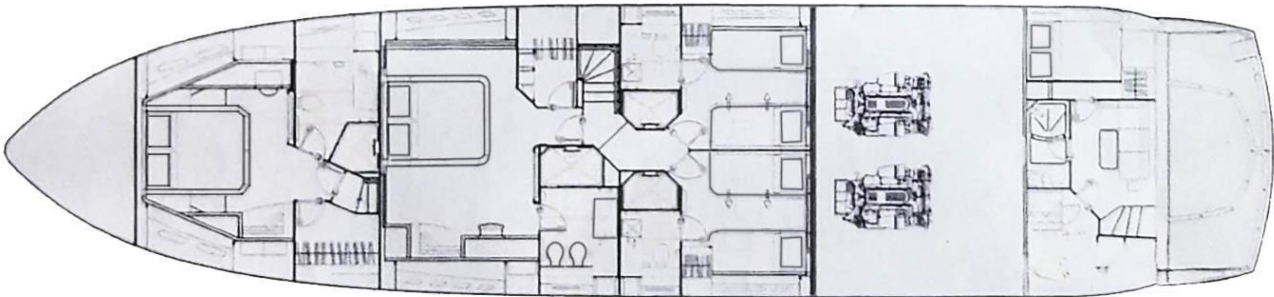
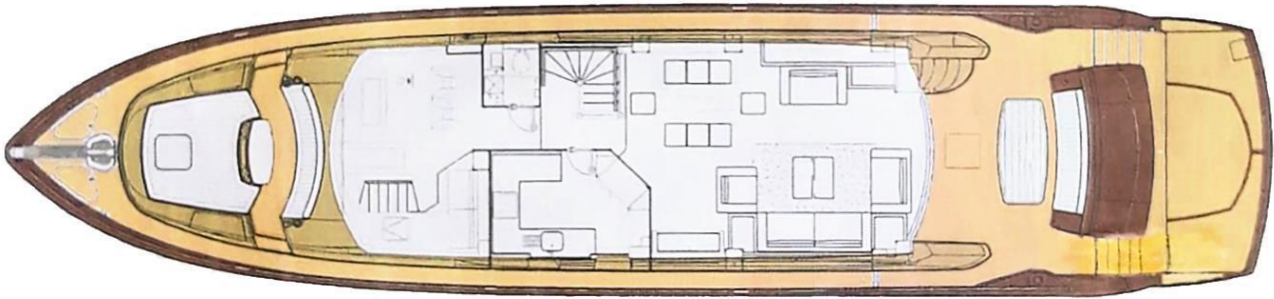
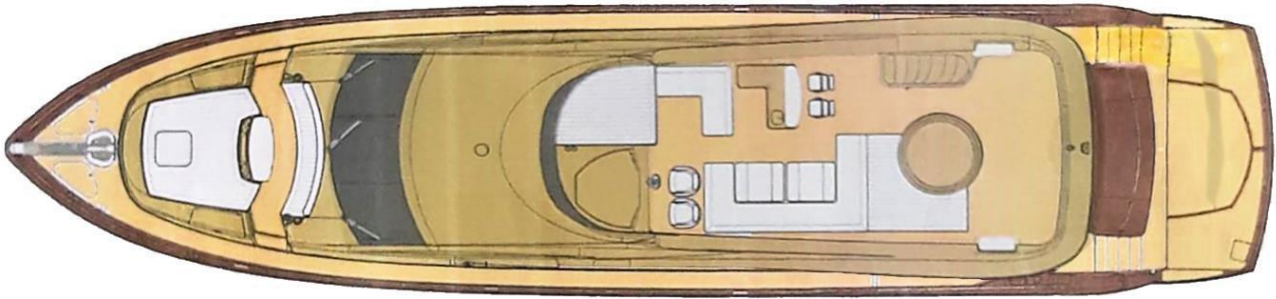




breezeYachting swiss







breezeYachting.swiss





breezeYachting.sw



EQUIPMENT

Machinery

Main Engines: 2 x 1825 ps
Engines Type: Caterpillar C32 ACERT
Hours: 2420
Gear-Box: Twindisc
Drive: V-drive, prop shaft

Speed-Consumption:

Cruising: 20 knots @ 1850 rpm, 400L p/hr
Max: 29 knots @ 2350 rpm, 750L p/hr

Generators & Electricity

Output: 12/24/220 V
Generators: Kohler 27kw
Hours: 2 hrs
Fuel Consumption: 5ltrs
Shore Power: 220 V

Batteries

Main Engines Starting: 8
Generator Starting: 4
Emergency: 8

Air conditioning Type

Clima Closed circuit reverse cycle with individual handle displays

Other Machinery

Watermakers: HRO / up to 220 ltrs
Trim Tabs-Stabilisers: N/A
Bow thrusters: Hydraulic Bow & Stern
Steering System: hydraulic

Communication system

SATcom: Furuno mini C/Felcon 16
VHF: Simrad RS82 2 handles with DSC

Navigation system

Radars: Raymarine X band ARPA
Magnetic Compass: 2
Auto Pilot: Simrad
Depth Sounder: Yes
GPS: Raymarine E120 series x 3 communicating with HS hub
Nav Tex: Furuno

breezeYachting.swiss



EQUIPMENT

Entertainment System

Video Equipment: Main Saloon Pioneer 55" TV , connected with Bose Surround and Satellite connection

All Suites: Flat TV's in all cabins with satellite receiver connections

Audio Equipment: Bose/ main Salon/ cockpit/ fly bridge/master bedroom

Galley and Laundry equipment

Cooking Equipment: Standard size Ceramic cooking plate Bosch / Bosch Oven

Tenders & Toys

Tenders: Wav marine 480 with 90 HP Evinrude

Toys: Seadoo spark Jet ski

Deck Equipment

Anchor Wind Gasls: 2

Aft Warping Capstands: 2

Anchors: 2

Anchor chains: 2x stainless steel chains/ 100m & 60 m

Boat Crane and Davits: Besenzoni Fly deck

Passerelle: Besenzoni

Swimming Platform: Rise & fall swimming platform

breezeYachting.swiss



EQUIPMENT

FireFighting Equipment

Fire Control System: yes

Fire Extinguishers: yes 5 / engine room FM 200 stabile extinguish system with 2x command post monitoring

Alarms: Yes/ smoke detectors throughout entire yacht

Safety Equipments

Life Rafts: 1

Life Rings: 2

Epirbs: 1

Flares: 12

Medical Equipment: yes

For more information, [CLICK HERE](#)

For virtual tour, [CLICK HERE](#)

breezeYachting.swiss





Cedrick Leclerc

Yacht Consultant Monaco

Mob +33673783657 e. cl@breezeyachting.swiss

breezeYachting.swiss

Gotthardstrasse 26, 6300 Zug
Switzerland

T +41 44 488 40 80

F +41 44 488 40 88

breezeYachting.swiss

