

SUNSEEKER PREDATOR 57





TECHNICAL FEATURES

Length:	18,24 m
Beam:	4,7 m
Draft:	1,3 m
Displacement:	29,4 t (full load)
Engines:	2 × Twin Volvo D13 900PS
Engines hours:	350
Fuel tank:	2200 l
Water tank:	600 l
Cabins:	3 + 1
Year built:	2015
VAT:	not paid

**EXCELLENT CONDITION
AVAILABLE FOR VISITS
LOCATION - SPAIN**

Asking price: 930 000 EUR

EQUIPMENT INSTALLED

- Generator Cummins 13,5 kW
- Tender Williams Turbo Jet
- Bow Thruster - Sleipner Side-Power SEP170/250T-24V - 10.7hp
- Stern Thruster - Sleipner Side-Power SEP100/185-24V IP - 8.4hp
- Volvo Penta Glass Cockpit MFD 15" x 2 Multifunctional Colour Radar Chartplotter. Garmin Speed and depth system with GMI 20 multifunctional colour instrument.
- Volvo Penta integrated pilot system on IPS. Garmin GHC 20 on Shaft. Garmin 4' 6kW open array xHD Radar antenna and GPS19x antenna. Garmin VHF 300i B with DSC function.
- Garmin GSD 24 fishfinder sounder module with through hull depth, temp and speed transducer B744V. Garmin AIS 600 Class B AIS Transceiver
- Garmin marine Wifi Adapte Searchlight - Jabsco Single Beam single station control
- Volvo Penta Shaft Low speed option
- Volvo Penta Trip control, Cruise control and Single lever control
- Xenta Smart-stick docking system at the Helm Console
- Aft docking station. Second Xenta Smart-stick docking, Multi panel and horn
- Compass Swinging and adjustment with correction card
- Isotta Steering wheel in CB Cream leather
- Preparation for future installation of a Water Maker. Seacock and outlets blanked off. Fresh water feed to tank. Power supply
- Antifouling application in International Interspeed Ultra 2 Black
- Hull and deck sprayed in metallic Warm Silver
- Interior AC 220V sockets - Euro 2 pin, additional AC 220v double socket

- Sealand 8600 series 24V toilet
- Air conditioning European specification
- Forward cabin Samsung 22" Television with Fusion MS-AV700i DVD/CD/Radio and infrared remote eye with Bluetooth module MS- BT 200 and Fusion PP-FR652 stereo speakers.
- Starboard Cabin Samsung 22" Television with Fusion MS-AV700i DVD/CD/Radio and infrared Remote eye with Bluetooth module MS- BT 200 and Fusion PP-FR652 stereo speakers.
- Master Cabin Samsung 40" Television with Harmon Kardon Blueraay/DVD/CD/Radio BDS275 head unit with Stereo flush mount PP- FR6520 speakers.
- Lower Saloon Samsung 22" Television with Fusion MS-AV700i DVD/CD/Radio and infrared remote eye with Bluetooth module MS- BT 200 and Fusion PP-FR652 stereo speakers.
- Deck Saloon Samsung 40" Television on a fall and rise system with Harmon Kardon BDS275 2:1 cinema system with Bluetooth and Stereo flush mount PP-FR6520 speakers and Subwoofer
- Aft Cockpit zone with Four Sonance Extreme Speakers with Sonos Connect and amplifier
- Fore deck zone with Two 4" Speakers and Sonos Connect amplifier
- The zoning audio linked to the Deck Saloon AV system via Sonos Connect with one iPad mini supplied for control of the zones through a Sonos App
- Waeco Coolmatic Refrigerator with freezer compartment HDC-155FF in the Galley
- Sleipner SPS 55 hull stabiliser unit with Vector Fin
- Lewmar Anchor winch V5GD-24V
- Stern docking Winches - Lewmar C3 fitted port and starboard Cockpit
- Glendinning Cablemaster - 1 x power feed and recovery AC shorepower cable
- Dinghy Inflator & socket 12 volt
- Horn - AFI Duel trumpet -11018 XLPD/24V
- Camera monitoring and docking system

- Low level LED side deck lights 8 per side
- Two Stern Docking Lights - Exterior Deck
- Underwater lights Aqualuma LED wide angle x 4
- Stainless steel LED interior overhead lighting
- Flexible arm Polished Chrome reading lights in the Master Forward and Starboard Cabin
- Bulkhead on mirrored panel either side of headboard
- Additional AC Socket to be located in the aft cockpit on the seat base.
- Windscreen Cover in Sunbrella Plus - Cadet Grey 5530
- Fresh water deck wash system outlet
- 90 Metres of Stainless steel 9.5mm anchor chain
- Lewmar 32Kg Delta Anchor - Stainless Steel
- Chafing bars for all mooring cleats
- Ceramic Hob 240V Plastimo touch control 4 ring 230V in the Galley
- Hob Extractor fan Bosch DHL 535B in the Galley
- Integrated microwave oven - Bosch HBC84E653B in the Galley
- Miele 220V Slimline Dishwasher G4760SCV in the Galley
- Integrated microwave oven - Bosch HBC84E653B in the Galley
- Miele 220V Slimline Dishwasher G4760SCV in the Galley
- Kenyon Marine Electric BBQ Grill in the Cockpit
- Icemaker Vitrifrigo in the Cockpit
- Refrigerator Waeco CR50 fitted in wet bar in the Cockpit
- Electric cooling unit for top loading cool box Coolmatic TBSC-100 chiller in the Deck Saloon
- Protective cover for the bow sunbathing cushion in Sunbrella
- Bow Sunbathing Cushions with folding back rests in Navigator

- Teak Side Decks
- Two 4" Speakers and Sonos Connect amplifier
- Lewmar Anchor winch V5GD-24V
- Low level LED side deck lights 8 per side in White
- Sliding glass cockpit door with drop down mechanism at seating to fully open the cockpit space
- Protective cover for the bow sunbathing cushion in Sunbrella Cadet Grey
- Hydraulic 3 stage Gangway in S/Steel with teak walkway
- Hydraulically lifting platform with maximum lift capacity of 450kg
- Fresh water deck wash system outlet
- Folding Stainless steel bathing ladder stowed under a GRP lid
- Tender recovery roller system for Williams RIB Turbojet 325
- Hand held swimming shower - Whale twister
- Glendinning Cablemaster - 1 x power feed and recovery AC shorepower cable
- Underwater lights Aqualuma LED wide angle x 4 in White
- Garage door storage net
- Scatter Cushions
- Rear Camper with windows in Sunbrella Plus
- Electric canopy for aft cockpit in Sunbrella Plus
- Water purifier for ice maker
- Additional pair 10" Oval Mooring Cleats
- Liferaft 8 Man Canister in cockpit storage space (Ocean ISO9650 RAF0125 24hr)
- Aft docking station. Second Xenta Smart-stick docking, Multi panel and horn
- Fresh water marina connection pressure regulator
- Teak decking







T-01R-3-1-16



SILF ISSEKER

140003116





T-3-GIR-3-1-16







SUNSEEKER

BATHING PLATFORM



BATHING PLATFORM + GANGWAY



BOW SUNBATHING AREA



COCKPIT + STERN SUNBATHING AREA



COCKPIT



COCKPIT



ENTRANCE ZONE TO SALON



SALON



HELM STATION – PILOT SEAT



HELM STATION – DASH BOARD



STAIRS TO LOWER DECK



STAIRS TO LOWER DECK



LOWER SALON: GALLEY + DINING AREA



GALLEY



GALLEY



DINING AREA



MASTER CABIN



MASTER CABIN



MASTER CABIN



MASTER CABIN



MASTER BATHROOM



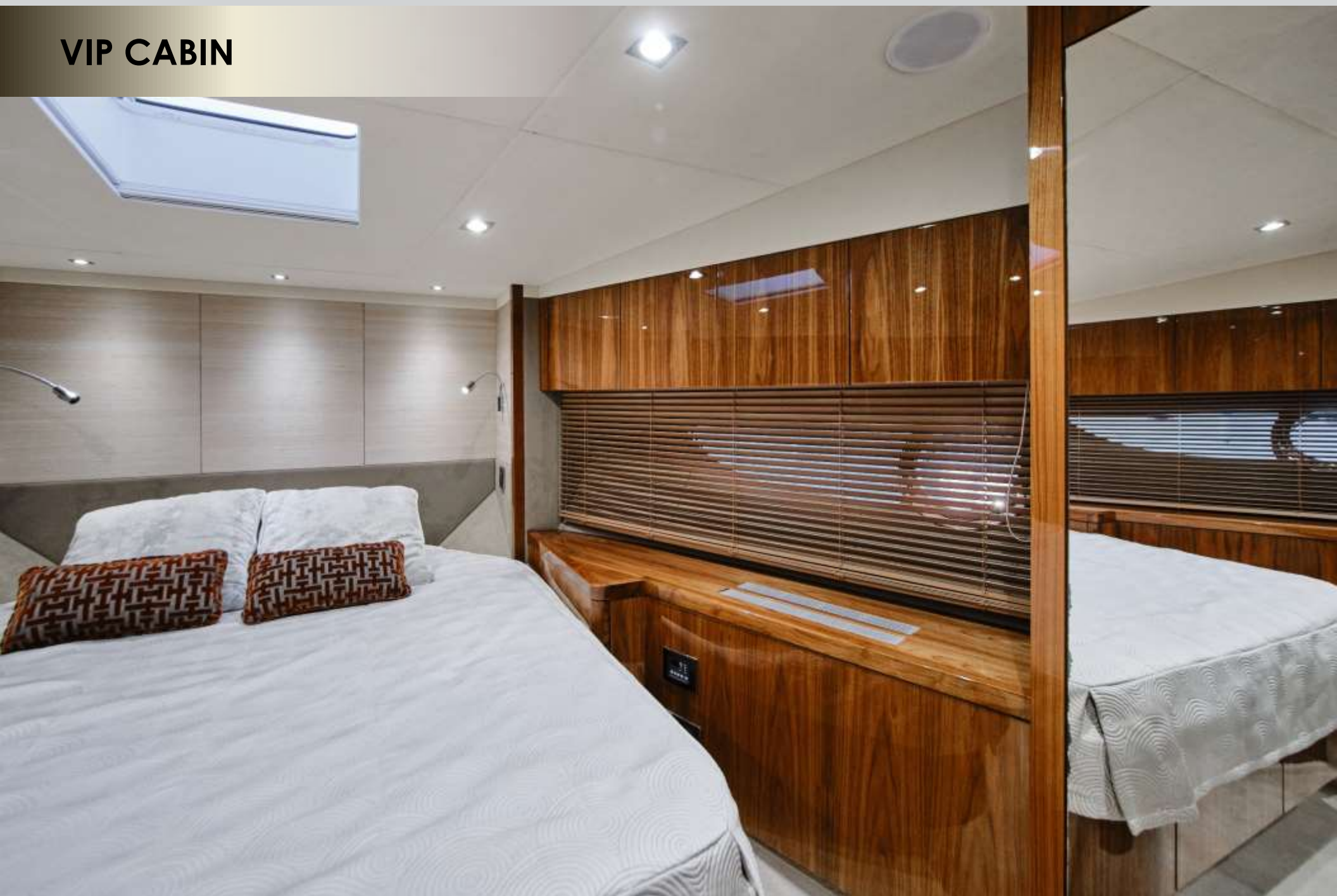
VIP CABIN



VIP CABIN



VIP CABIN



VIP BATHROOM



UPPER DECK LAYOUT



UPPER DECK LAYOUT: TOP VIEW



LOWER DECK LAYOUT

