

breezeYachting.swiss



SUNREEF 68 SUPREME 'KUKLA'

EUR 2,680,000 excl. Vat | 20.45m | 2017

breezeYachting .swiss



SPECIFICATIONS

Manufacturer

SUNREEF YACHTS

Year

2017

Length

20.45 m / 67.1 ft

Draft

1.1 m / 3.7 ft

Main Engine

2 x VOLVO IPS 800 HP

Fuel

7,000 Litres + 2 x 500 Litres modular = 8,000L Total

Guest Configuration

8

Guest Cabins

4

Model

Supreme 68 Power

Construction

Advanced Composites

Beam

10.5 m / 34.5 ft (max)

Max Speed

20 knots

Engine Hours

± 1846

Generator Hours

7023 / 6479

Water

1,000 Litres / 264.17 US gal

breezeYachting.swiss





breezeYachting swiss





breezeYachting swiss





breezeYachting swiss





breezeYachting .swiss





breezeYachting.swiss





breezeyachting swiss





breezeYachting.swiss





breezeYachting.swiss





breezeYachting.swiss





breezeYachting.swiss





breezeYachting.swiss





breezeYachting.swiss





breezeYachting swiss





breezeYachting swiss



Starboard

iPhone Photo August
2021



breezeYachting.swiss



Stern

iPhone Photo August
2021



breezeYachting.swiss





breezeYachting.swiss





breezeYachting.swiss





breezeYachting.swiss





Flybridge
iPhone Photo August
2021

breezeYachting.swiss

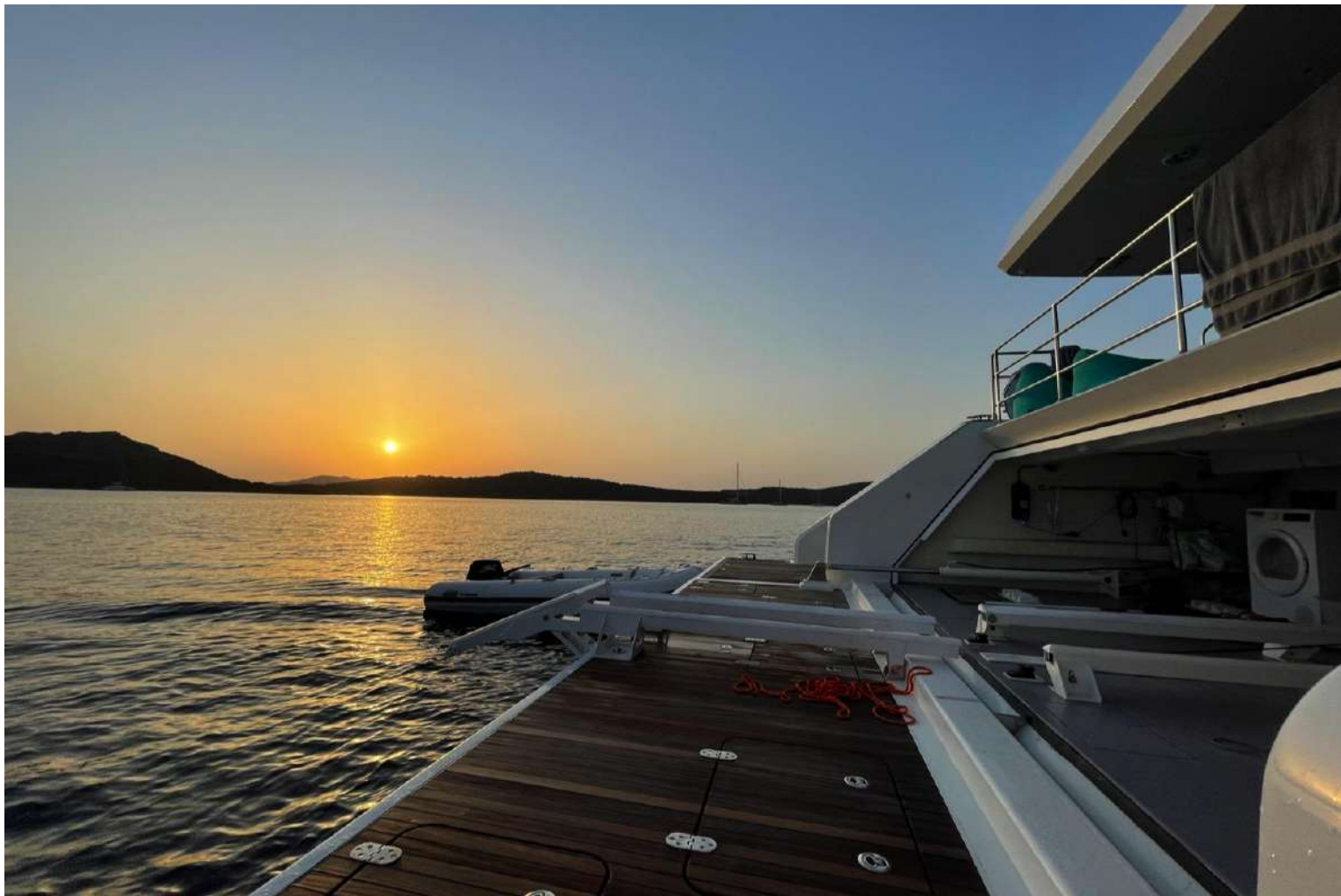




Flybridge
iPhone Photo August
2021

breezeYachting.swiss





Garage

iPhone Photo August
2021

breezeYachting.swiss



Sunset

iPhone Photo August
2021



breezeYachting.swiss





breezeYachting.swiss





Sunset

iPhone Photo August
2021

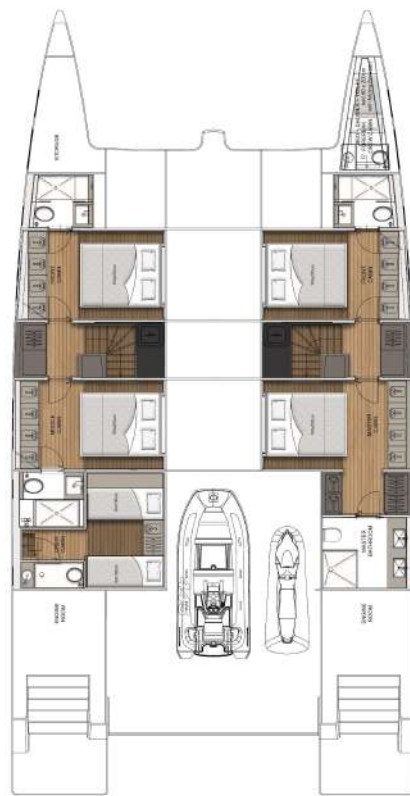
breezeYachting.swiss





breezeYachting.swiss





breezeYachting.swiss



EQUIPMENT & FEATURES

MECHANICS

2 x complete engine (VOLVO)
Stainless steel shafts
Fuel tank: 7,000 Litres
Rope cutters on the propeller shafts
1 engine speed controls (on flybridge) + extra engine instruments
Fuel filter with water separator in engine and generator fuel delivery line
Fuel consumption estimation system

DECK GEAR

Hydraulic gangway
Port lights with big side windows
2 x swim ladder
Bimini on flybridge with 6 lights
Customized Bimini structure
Bimini clear view surrounding windshield

ELECTRICAL SYSTEMS

Upgraded electric kit: AC-230V 50Hz 1PH
2 x chargers (24V/100A)
2 x shore power inlet 63A
Inverter (220V/ 50Hz/ 5000W)
3 x sockets in cabins, 4 sockets in saloon, 4 in dining area, 4 in galley
50/60Hz shore connection kit
ASEA frequency converter

Additional Inverter (230V/ 50Hz/ 5000W)
2 x alternators 24V, 75A each
Generators: 2 x 17.5 KVA Cummins Onan
Generator 1 hours: 6300
Generator 2 hours: 5700
Dinghy electric launching system with remote control

LIGHTS

Interior lights with LED lamps
Navigation lights with LED lamps
Exterior lighting (LEDs, search light, lights on flybridge)
Deck floor lighting (cockpit, stairs, flybridge)
Lights in the engine room
Domotic system for lights, controls, and D/C system, including dimmers for ceiling lights
Underwater lights LED, white or blue

NAVIGATION & ELECTRONICS

Simrad electric pack: 2pcs MFDs 12", radar 4G, autopilot, AIS, depth, speed & temp sensor, GPS, VHF with DSC function (dual station, built in AIS receiver, Hailer/Horn Loudspeaker, Intercom function)
Compass (size 135mm)
Chronometer & barometer

breezeYachting.swiss



EQUIPMENT & FEATURES

NAVIGATION & ELECTRONICS cont

Upgraded Raymarine navigation
Extra Raymarine monitor 15.4" on Helm Station in Salon
Yacht controller (remote controller for engines, windlass, bow thrusters)
2 x External camera with color & night vision
Satellite communication system KVH V3 IP
Satellite TV Antenna KVH TV6
4G/LTE Wifi Antenna
Flaps

PLUMBING

Freshwater: 1 x 1,000 L with level indicator, pressurized pump with stainless steel tank, 2 water heaters of 80 L each
Black Water: 1 x 335 L tank discharge system equipped with 3 way valves (discharge in the sea or holding tanks)
Watermaker 280 l/h - 230V
4 x electrical bilge pumps
2 x manual bilge pumps
Hand shower on deck
Electric toilets 24V in bathrooms with fresh water flush
Fresh water inlet
Fresh water outlet on deck
Additional bilge pump in both forepeaks

COMFORT ON BOARD

Air conditioning (Frigomar): saloon, cabins, owner bathroom.
124 000 BTU, Heating (reverse cycle) works when the temperature of the water is higher than 5C
Galley equipment: Refrigerator with freezer, microwave, electric 2-burner stove, dishwasher, cooker hood
Electrically recessed blinds on front windows in saloon & master cabin, manual blinds in guest cabins
1 x LED TV 75" Samsung (saloon)
1 x LED TV 40"
1 x Apple wireless system/ Apple TV
2 x lifting system (up/down) for TV
4 x waterproof speakers (flybridge)
Heos by Denon Surround Sound System 5.1
2 x waterproof speakers in front area & 2 in aft cockpit
Washing machine & dryer with complete installation
Additional refrigerator for drinks in salon
2 x ice makers
1 x wine cooler (32 bottles)
Flybridge cushions set & flybridge mattress
Foredeck sunbath mattresses
Flybridge bar module with sink
Stainless steel BBQ
Jacuzzi

breezeYachting.swiss



EQUIPMENT & FEATURES

SAFETY EQUIPMENT

Manual fire extinguisher system in engine rooms
Complete rescue equipment with liferafts for 12 ppl
Adaptation to Commercial Requirements, Malta Commercial Code 2015
MAN overboard system with AIS system

MOORINGS & TOOLS

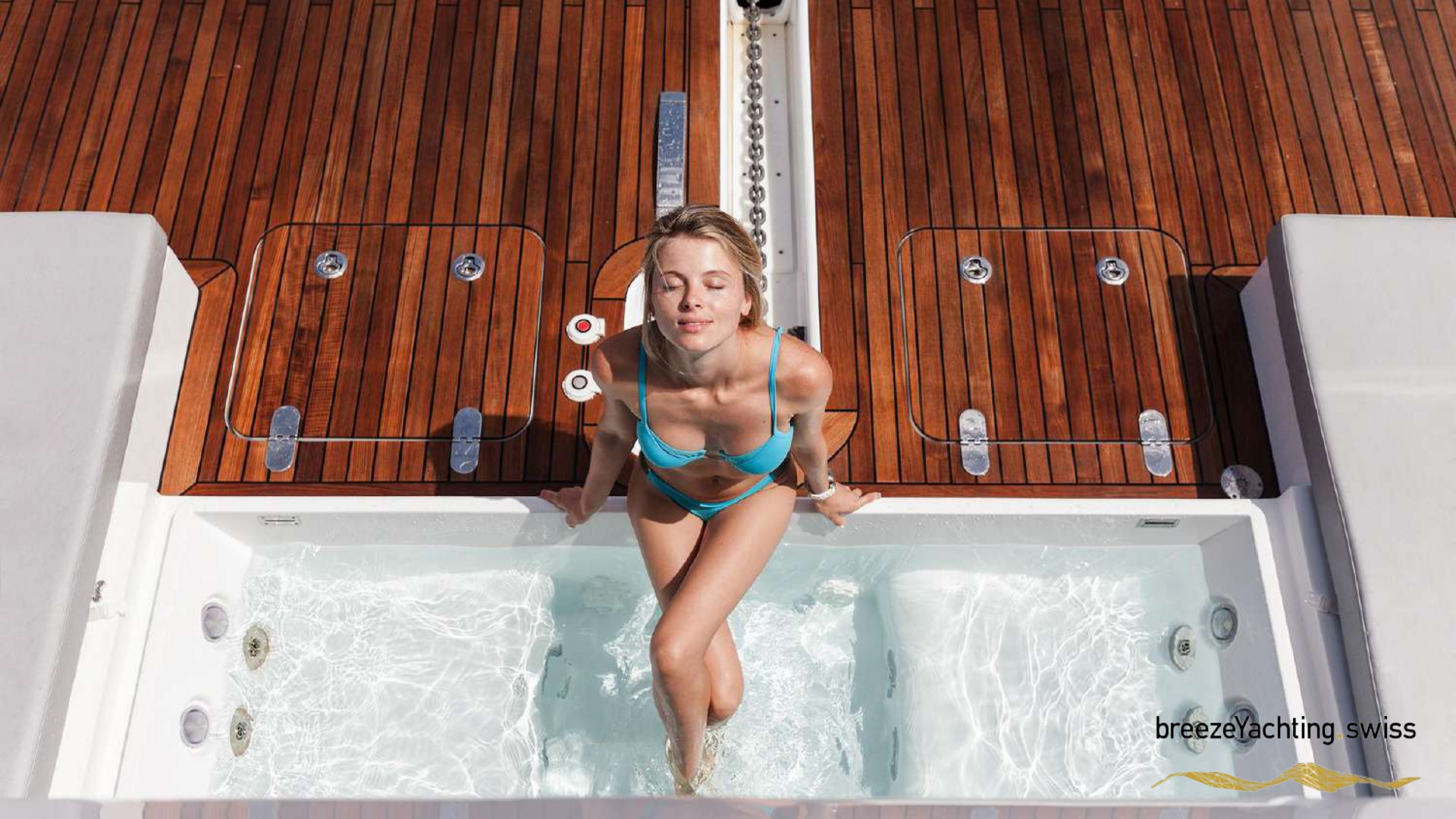
Windlass 24V
DELTA Anchor 63 kg + 80m chain (13mm diameter)
DELTA Anchor 20kg + 20m galvanised chain (10mm)
8 x fenders
4 x mooring ropes
50m tow line
2 x aft mooring capstans Quick
Rudders
Steering Wheel
Hydraulic steering system
2 x emergency tillers
Self-aligning lower and top bearings

ADDITIONAL

Outside day head with extractor
Shower head on cockpit with mixing valve
Full insulation in engine rooms
Extra insulation in master cabin
Outdoor/waterproof TV 47"
Reversible transfer fuel pump
Mooring monitor/camera aft
Electric pump for engine oil change (both engines)
Antifouling

breezeYachting.swiss





breezeYachting.swiss





breezeYachting swiss





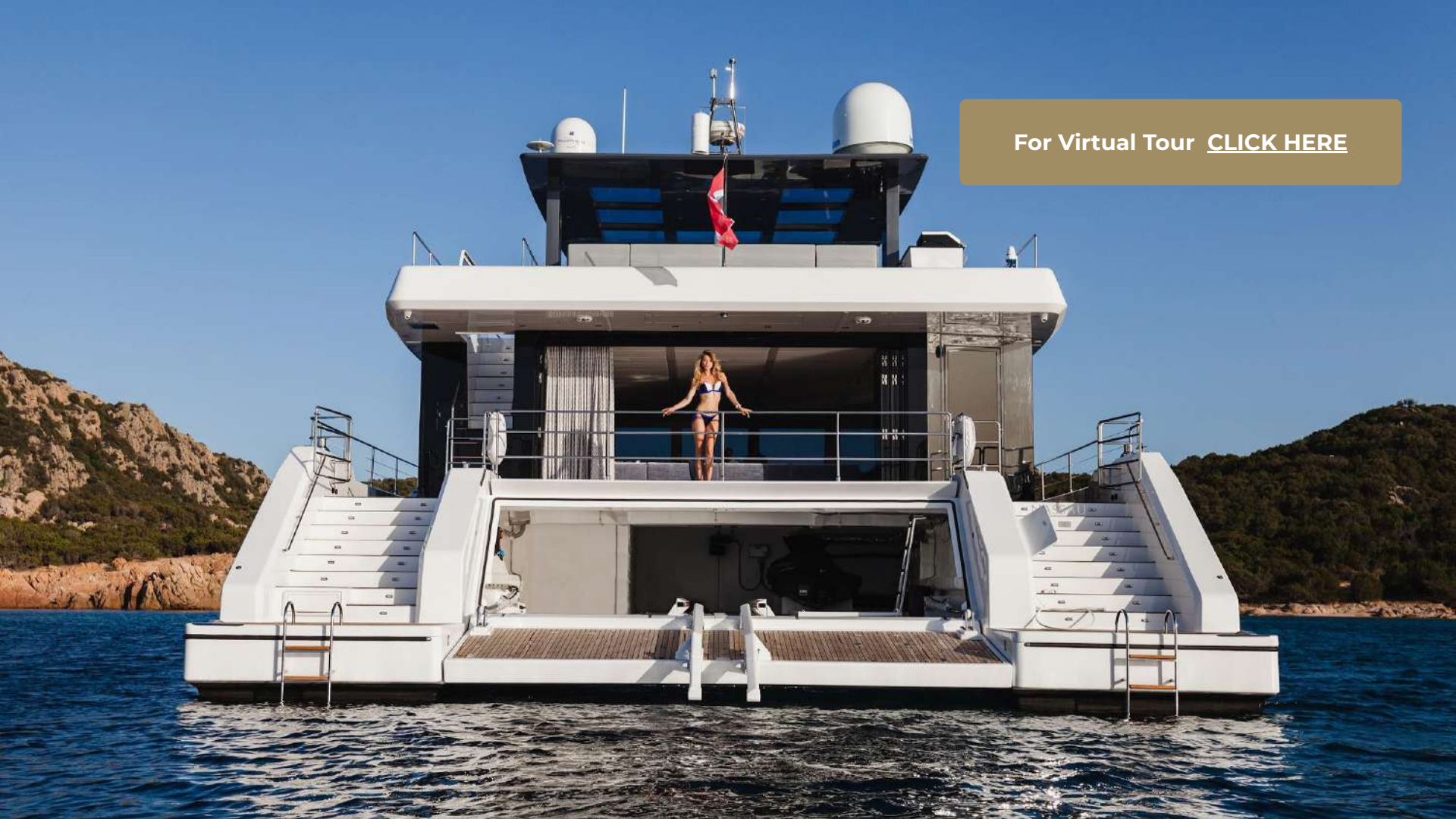
Intellian

Suprima

30 Sunseeker Yachts

breezeyachting.swiss





For Virtual Tour [CLICK HERE](#)



CORNELIUS KISTLER

Founder & CEO

 WHATSAPP ME

m. +41 79 702 7000

ck@breezeyachting.swiss

breezeYachting.swiss

WE SPEAK YACHTING. LET'S TALK.



Gotthardstrasse 26, Zug, Switzerland

www.breezeyachting.swiss

DISCLAIMER

The company offers the details of this vessel in good faith but cannot guarantee or warrant the accuracy of this information nor warrant the condition of the vessel. A buyer should instruct his agents, or his surveyors, to investigate such details as the buyer desires validated. This vessel is offered subject to prior sale, price change or withdrawal without notice.